



PRIVATE SHOWING

TER DROHOJOWSKA-PHILP
SCOTT FRANCES

IT IS ALWAYS A GREAT COMPLIMENT WHEN CLIENTS DECIDE TO USE A DESIGN TEAM FOR MORE THAN ONE PROJECT. Such was the case when the owners of a home in Irvine Cove asked Laguna Beach-based designer Sheldon Harte, ASID, of Harte Brownlee & Associates Interior Design, and Stewart Woodard, AIA, of The Woodard Group in La Quinta, to design a second residence for them in an

INTERIOR DESIGN Sheldon Harte, ASID, Harte Brownlee & Associates Interior Design

ARCHITECTURE Stewart Woodard, AIA, The Woodard Group

BEDROOMS 3 **BATHROOMS** 4 **SQUARE FEET** 16,000



CONTINUED FROM PAGE 198

exclusive enclave in Indian Wells. Art collectors who desired a suitable backdrop for their collection, the owners wanted their desert house to have a contemporary feel, with lots of wide open spaces and expansive interior walls for their paintings.

Woodard's response was to create a simple pavilion with a raised roof and walls of glass looking out to the golf course and craggy Santa Rosa Mountains beyond. The pavilion roof, supported by four diagonal braces, raises the interior ceiling height from 10 feet to a soaring 18 feet over the great room. "I wanted to form a canopy over the living areas," says Woodard. "So the roof sails way out over the confines of the spaces below." This is especially apparent at the rear of the house, where the roof hovers above a trellis and provides much-needed shade from the desert sun.

SPECIAL ORDER

The great room sofas were custom designed by Harte Brownlee, as was the rosewood veneer coffee table, which is accented with silver leaf. The round tea tables are from J. Robert Scott in Los Angeles.



POOL OF LIGHT

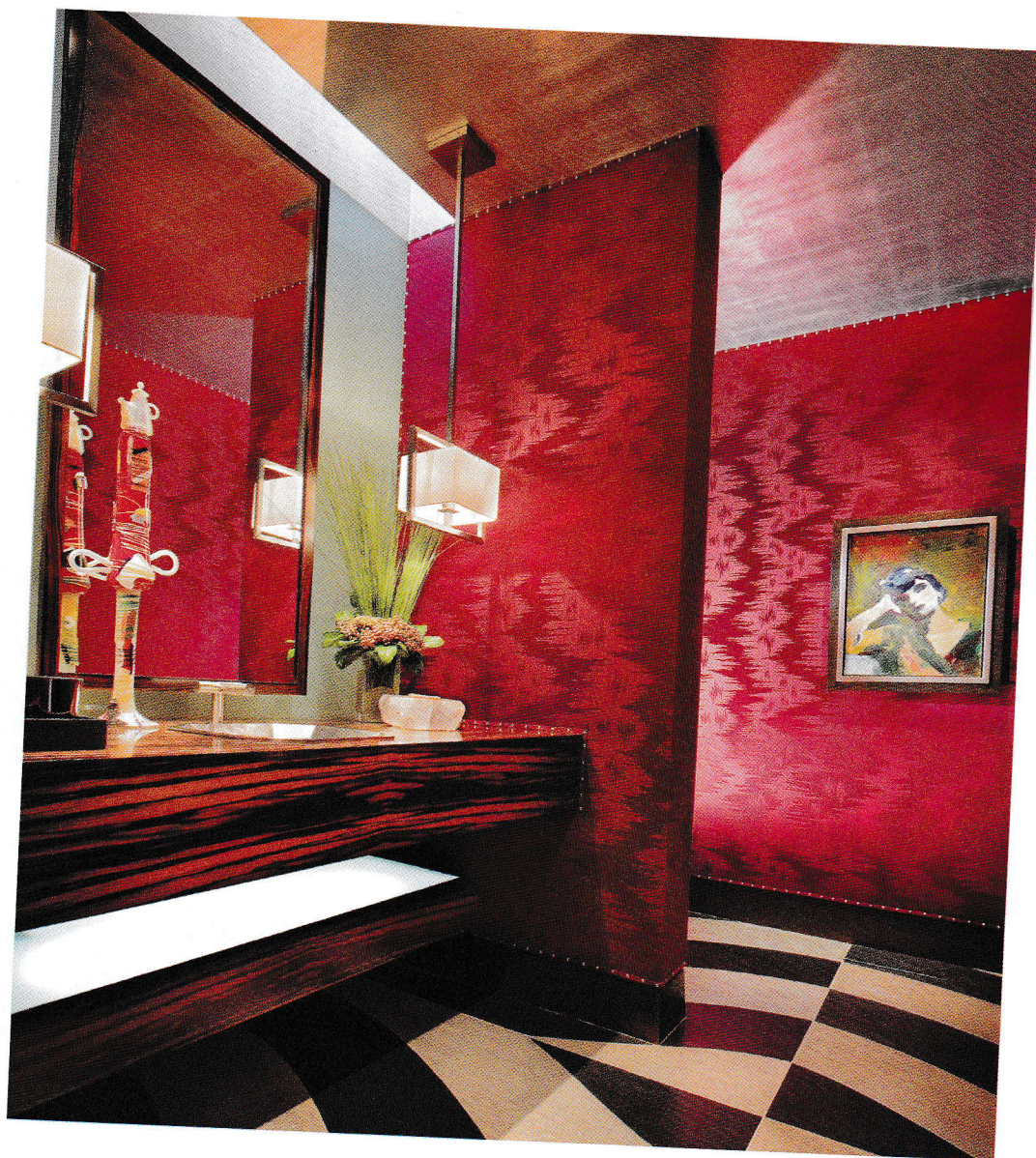
The subterranean level features a bronze and anodized steel billiards table found at David Sutherland. The fixture over the table is by Satori Light Sculptures.

CONTINUED FROM PAGE 201

Dramatic tone set, Harte customized the interior with reflective ceilings, exotic wood paneling and a stainless steel front door, the perfect answer to the owners' request to meld the spare integrity of classic modern design with the comforts of rich materials. "The house sits on the lot extremely well," says Harte. "There are great open spaces so it tells an inside/outside story, but has a moody side as well."

The compound comprises 16,000 square feet of living space, with a master bedroom and two guest rooms in the main house; two adjacent guest villas accommodate visits from the couple's three grown children and their families. The expansive sense of space is contained by the warm, deep tones Harte employed throughout the house. "We used a wide range of colors: taupe, brown, green, navy, black and white, with





WINE ROOM

A powder room is upholstered in a dark red moiré fabric detailed with brushed nickel nails. Harte designed the honed black granite and limestone floors; the custom sinks are white bronze supported by counters of Macassar ebony.

CONTINUED FROM PAGE 204

accents of red." In the kitchen, an abundance of sleek stainless steel is warmed by panels of dark wenge wood and a floor composed of end cuts of mesquite. It opens onto the morning room, where the couple likes to breakfast amidst their paintings, *Deli Bowls* by Wayne Thiebaud and *Streaks* by Norman Sunshine among them. "The house was done for the art collection, comfortably and in a controlled palette," says Harte.

The morning room opens up onto the backyard, with sliding doors that telescope into the walls to expose the room even more to the outdoors. In the great room, a spiral staircase gracefully descends to the



CONTINUED FROM PAGE 207

A private wing on the main level is dedicated to the owners' needs and includes the master suite, which features a panel of Macassar ebony of unusually large grain that was bleached by Harte's team, and a bed of Zebrano wood from Therien & Co. Hanging on a wall covered in brown plissé fabric is *Untitled #1 (Spade Series)* by Richard Diebenkorn. The husband's office, with its walls coated in dark blue automotive paint, supports Paul Wonner's oil on canvas, *Sarah Vaughan Singing, Riviera Hotel, Las Vegas*.

The desert landscape around Indian Wells has inspired some of this country's greatest modern residences. This house by Harte and Woodard adds a new design delight to the region. **L**

